

RO-NI

HYPERWATCHES CREATORS



INTRODUCTION

VIBRATIONS. IN EVERYTHING I DO I ALWAYS FIND A PHYSICAL QUANTITY WHICH IS THE VIBRATION. AS AN ENGINEER, I DEALT WITH MANY THINGS, WITH MANY ANALYZES, IN VARIOUS SECTORS, WHERE I WAS CALLED, BUT EVEN WHEN IT WAS NOT THE MAIN THEME THERE WAS ALWAYS AN ELEMENT PRESENT THAT I STUDIED IN DEPTH: VIBRATIONS. IN ALL THIS EXCITING WORK WITH ME THERE WAS ALWAYS A WATCH, STRICTLY MECHANICAL, AND EVERY TIME I DWELLED ON THE VIBRATIONS, I STOPPED FOR A FEW MOMENTS TO LISTEN TO THE TICKING OF THE CLOCK. THE THOUGHT WAS ALWAYS THE SAME: BUT WILL THESE VIBRATIONS DAMAGE MY DEAR WATCH?.....NICOLA ROSA

2014 START THE RO-NI PROJECT - HYPERWATCHES CREATORS: A NEW VISION TO CREATE TECHNOLOGICALLY PERFECT WATCHES. RACE AND MOTORSPORT ARE OUR PHILOSOPHICAL REFERENCE.

RO-NI INTRODUCES THE CARBON FIBER SUSPENSION SYSTEM IN THE WATCH: THE *HANDLING* CONCEPT IS RO-NI'S DNA.

RO-NI NEVER STOPPED, THE RESEARCH IS CONSTANT, THE DESIRE OF THE TEAM IS CONSTANT, THE REQUESTS FOR PARTICIPATION IN THE STUDY AND DEVELOPMENT ARE INCREASINGLY PRESENT AND THE SPIRIT OF INNOVATION GROWS EVERY DAY IN US AND IN OUR PRECIOUS SUPPORTERS AND PARTNERS.

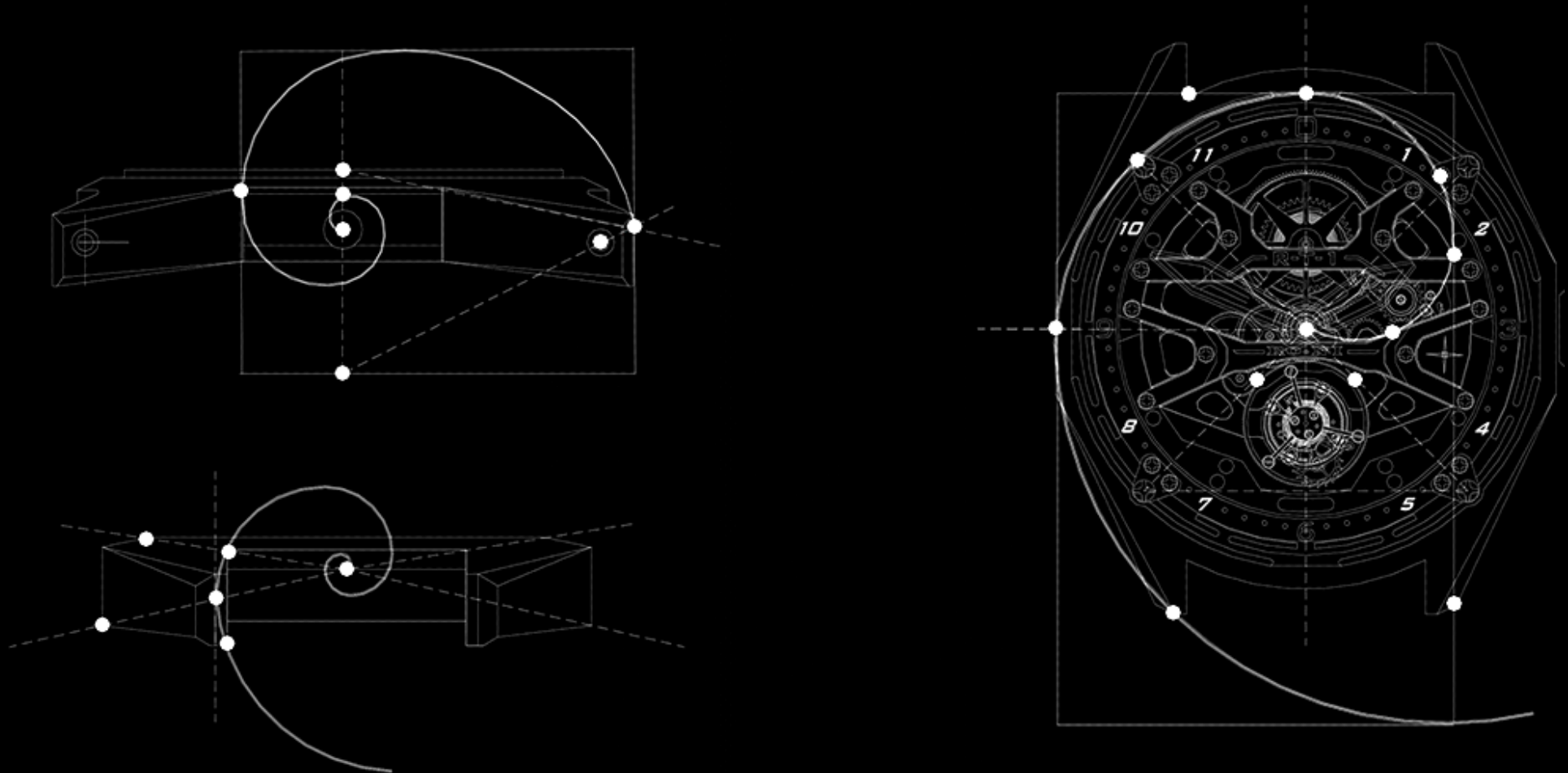
OUR PHILOSOPHY: TO IMPROVE OUR PERFORMANCE.

NOTHING COMES BY CHANCE.....



GOLDEN SECTION

NATURAL HARMONIC BEAUTY



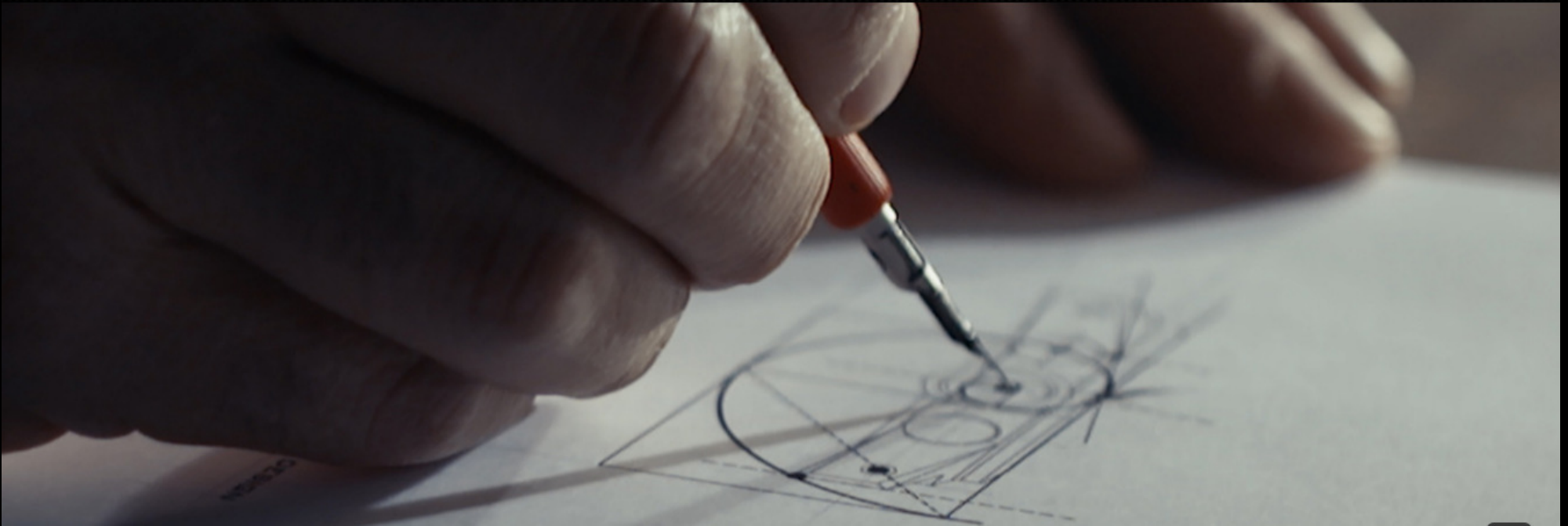
THE RULES OF PERFECT PROPORTIONS DRAW OUR LINES



PHILOSOPHY

ENGINEERING & ART

DRAWING OR FINISHING BY HAND GIVES US TIME TO THINK WHAT WE ARE CREATING



TECHNOLOGY AND ART ARE COMPANIES. MANUFACTURING IS THE COMPLETION OF THE CNC PROCESS AND THE PENCIL DRAWING IS THE CONCEPT BEFORE 3D.



ONE TO ONE

THE MAN AND HIS ART

EXCLUSIVE MANUFACTURE ONE-TO-ONE

EXCLUSIVE MANUFACTURE SIGNED BY MAN.

EVERY WATCH IS BUILT IN A SINGLE DEDICATED PROCESS WITH COUPLINGS PERFORMED PIECE BY PIECE: THIS IS THE OUR ONE TO ONE PROTOCOL. EVERY WATCH IS FINISHED BY HUMAN HANDS AND CONTROLLED BY HUMAN EYES FOR ABSOLUTE PERFECTION IN A MASTERPIECE OF ART. WE DO NOT USE ANY MOLDING PROCESS BUT ONLY SOPHISTICATED WORKINGS FROM SOLID WITH CONSTANT HUMAN CONTROL.





DNA

HANDLING - TECHNOLOGY

OUR MISSION IS A PERFECT PERFORMANCE IN ALL CONDITIONS. WE HAVE CREATED INTEGRATED STRUCTURES THAT WORK AGAINST SHOCK AND VIBRATIONS: HANDLING PROJECT.

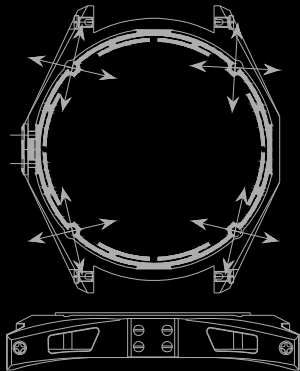
DISCOVER THE TYPES OF HANDLING ON THE WEB SITE.

TEMPESTA SERIE: HANDLING S - SR...

RT1 SERIE: HANDLING R - RS - RSR...

RS

CHASSIS

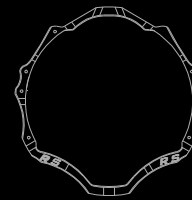


BODY



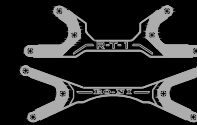
TRACTION
SYSTEM
WITH
ABSORBER

FRAME



FRAME
LIGHTENED
GEOMETRY

SHOCK
ABSORBERS



SUSPENSIONS
CARBO
GRAPHENE
CG-30-SV



3 DIRECTIONS FREE
3D SUSPENSION

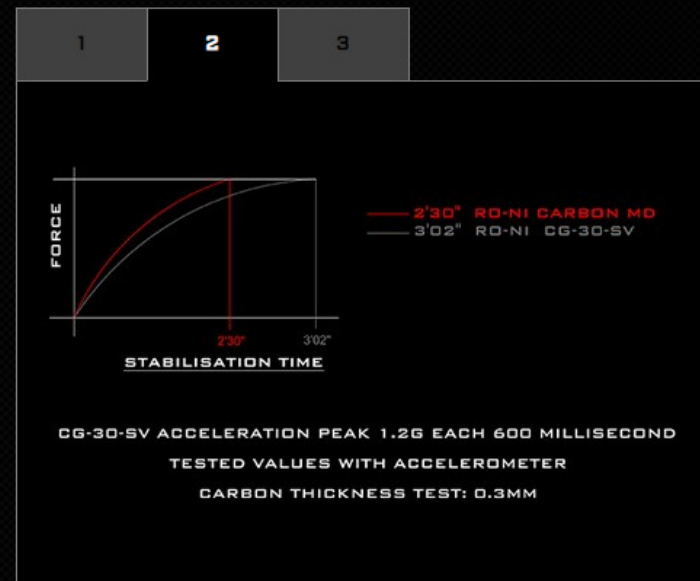
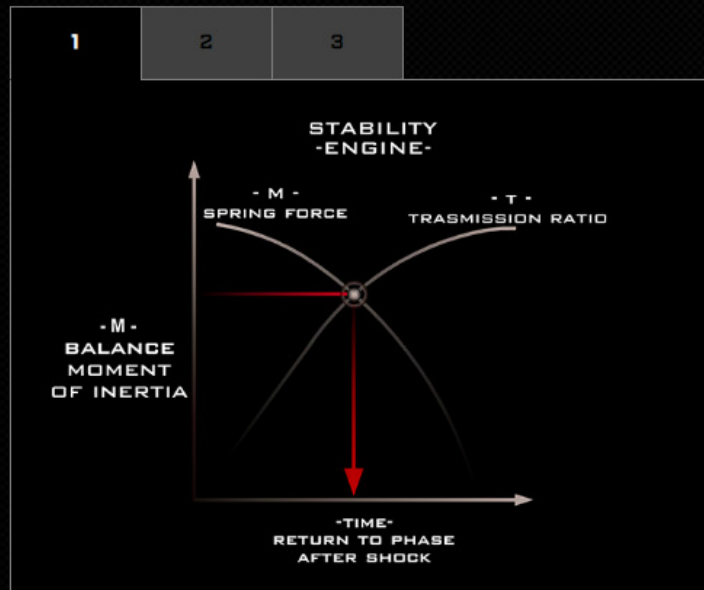


PERFORMANCE

N ° 1 IN THE REDUCTION OF VIBRATIONS

IN THE PURSUIT OF PERFECTION, INVENTION REWRITES THE RULES OF EXPERIENCE. OUR WATCHES ARE BORN FROM THE "RACE", WHERE WE COME FROM, FROM OUR EXPERIENCE IN EXTREME COMPETITIONS AND FROM OUR ENGINEERING BACKGROUND. THE EVOLUTION IS THE RESULT OF OUR FUTURISTIC VISION, FROM THE EXPLORATION OF NEW MATERIALS AND NEW TECHNOLOGIES APPLIED TO THE WORLD OF "RACE" IN A CONSTANT WORK THAT IS THE BASIS OF OUR PASSION. RECORD FOR US MEANS PERFECT BALANCE IN ALL CONDITIONS FOR PERFECT TIMING. THE PERFECT ALCHEMY BETWEEN A MATERIAL, ITS OPTIMAL WEIGHT, ITS FUNCTIONAL GEOMETRY AND ITS FUNCTION IS THE REAL GOAL, THE REAL ABSOLUTE PERFORMANCE RECORD.

DISCOVER THE PERFORMANCES ON THE WEB SITE





ART COLLECTION



SERIE TEMPESTA



SERIE RT1



TEMPESTA

BORN AS A PROTOTYPE FOR THE EXPERIMENTATION OF MATERIALS INTENDED FOR THE EVOLUTIONS OF R-T-1, GO FROM LABORATORY TO FIELD TESTS, DAY AFTER DAY, BECOMING POWERFULLY AMBASSADOR OF RO-NI PHILOSOPHY.

TEMPESTA IS A COMPLEX MASTERPIECE EQUIPPED WITH PERFECT CHRONOMETRY GUARANTEED BY CONSTANT CHARGE AND VARIABLE FREQUENCY CURVE IN TITANIUM STRUCTURE SUSPENDED WITH CARBON FIBER, EQUIPPED WITH *HANDLING S* SYSTEM AND AN AVERAGE WEIGHT OF 39GR (VARIABLE ACCORDING TO STRAP SIZE) IS THE MAXIMUM EXPRESSION OF UNSTOPPABLE AND SYNTHESIS OF PERFECT BALANCE.





TEMPESTA MONARCH



THE PASSION OF TRADITIONAL GOLDSMITH ART MEETS THE TECHNIQUE OF PAINTING THE FIBERS.

THE BRILLIANCE OF THE DIAMOND ENHANCES THE PURITY OF THE MASTERPIECE.



TEMPESTA LUPIN



COMPLEX COMBINATION OF COLORS, HAND-PAINTED AND THE SEARCH FOR PERFECT STONES: A MASTERPIECE OF ART

- WE ARE READY TO FULFILL ANY OF YOUR FANTASIES -



TEMPESTA MONARCH PLUS

- SOFIA GOGGIA -



PRECISE CHOICES, MATERIAL RESEARCH, AND COLOR BALANCE.

ETERNAL MASTERPIECE, EXPRESSION OF ELEGANCE AND CONCENTRATION
OF THE POWER OF STONES AND ENERGY OF COLORS.


RO-NI

TEMPESTA MONARCH PLUS - SOFIA GOGGIA -



THE STRENGTH OF THE RUBY, ITS COLOR ON THE DIFFERENT MATERIALS IS ILLUMINATED BY THE PURITY OF THE DIAMOND.

RO-NI

TEMPESTA MONARCH PLUS - SOFIA GOGGIA -



DETERMINATION AND EXQUISITE CLASS



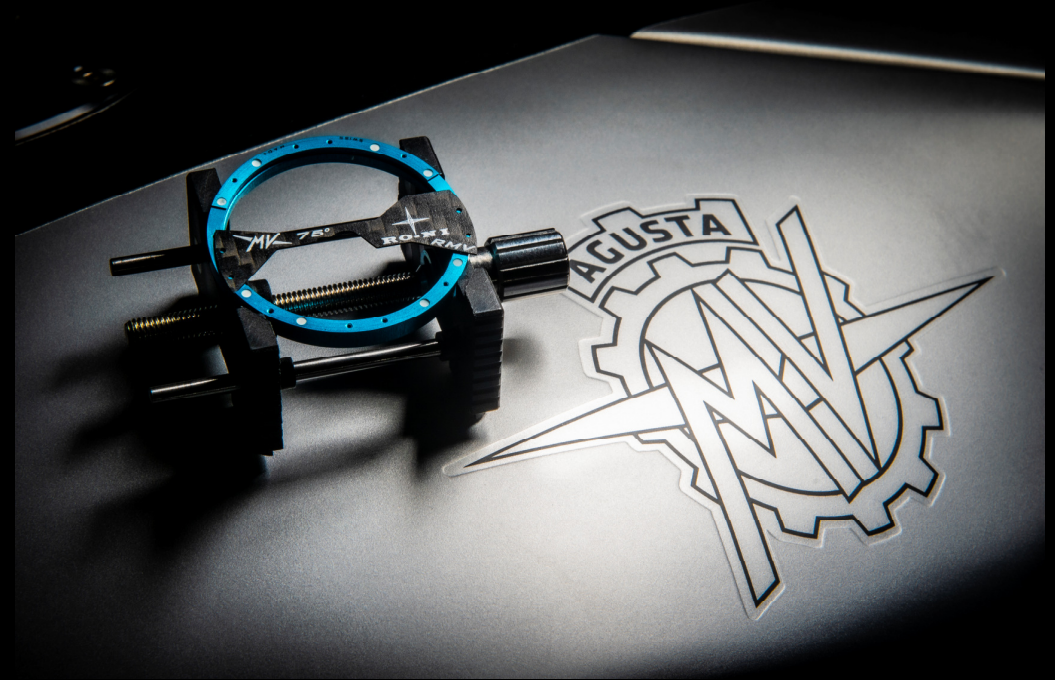
TEMPESTA RMV - MV AGUSTA

75° ANNIVERSARIO





TEMPESTA RMV - MV AGUSTA 75° ANNIVERSARIO



BORN TO CELEBRATE THE 75TH YEAR OF THE FOUNDATION OF THE PRESTIGIOUS MV AGUSTA MOTORCYCLE MANUFACTURER, IT IS A COMPLEX MASTERPIECE THAT ARISES FROM THE JOINT PROJECT BETWEEN RO-NI AND MV AGUSTA. RMV IS PRODUCED ON REQUEST, IN A LIMITED NUMBER AND IN A COMPLETELY MANUAL PROCESS.

RMV IS THE RESULT OF A CAREFUL STUDY OF THE MATERIALS DERIVED FROM THE RACE, 7075 ALUMINUM, CARBON FIBER, TITANIUM, ALCANTARA AND THE SEARCH FOR THE TYPICAL COLORS OF THE MV AGUSTA BRAND CONDENSED INTO A PERFECT TECHNICAL ARTISTIC BALANCE.



RO-NI

TEMPESTA ICE





RO-NI

TEMPESTA ICE



RO-NI TECHNOLOGY THAT PRESERVES THE FIBER SUSPENSIONS BUT WITH GOLD AND DIAMONDS ONCE AGAIN IN AN EXTREME STUDY. THE DIAL WITH A THICKNESS LESS THAN THE DIAMOND EMBRACES THE STONE VISIBLE AT ITS APEX ALSO FROM THE PLATEN SIDE: THE BRILLIANCE OF THE STONE IS AT THE HIGHEST POSSIBLE LEVEL. TECHNICAL MASTERPIECE.



RO-NI

TEMPESTA R



EXTREME GENERATION



TEMPESTA R



OVERSIZED AND DECORATED VDS STOPPERS

VDS STOPPER IN CARBON GRAPHENE CG-30-SV

CORNERSTONES IN CARBO FIBER

DETACHABLE CARBON FIBER BEZEL - 12 SCREWS

MOVEMENT WITH DLC TREATMENT

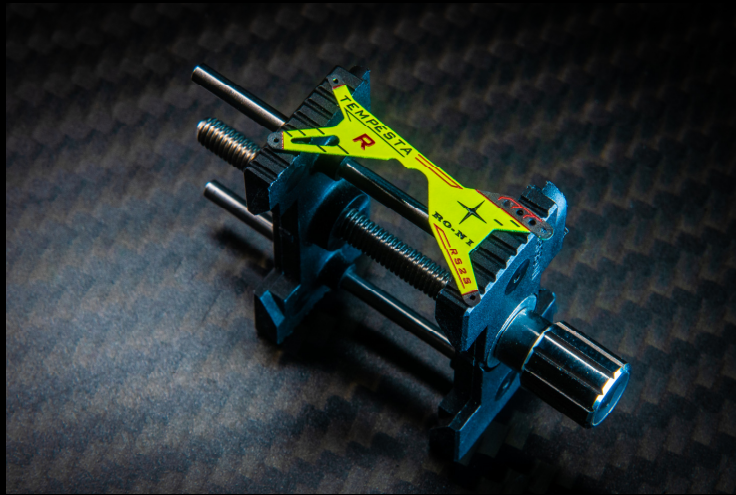


TEMPESTA R





TEMPESTA R



A DESIRE



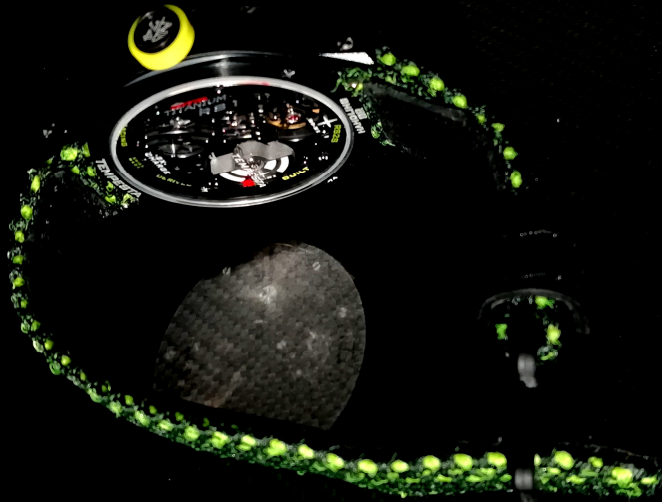
TAILORMADE

EVERYTHING IS POSSIBLE

IN RO-NI



RO-NI





TEMPESTA R+



THE ENERGY OF THE STONES MEETS THE CARBON FIBER IN A TECHNOLOGICAL MASTERPIECE



TEMPESTA R+



A VERY REFINED BESPOKE PROJECT IN FULL TAILORMADE TO MEET EVERY COLOR DESIRE

RO-NI

R-T-1

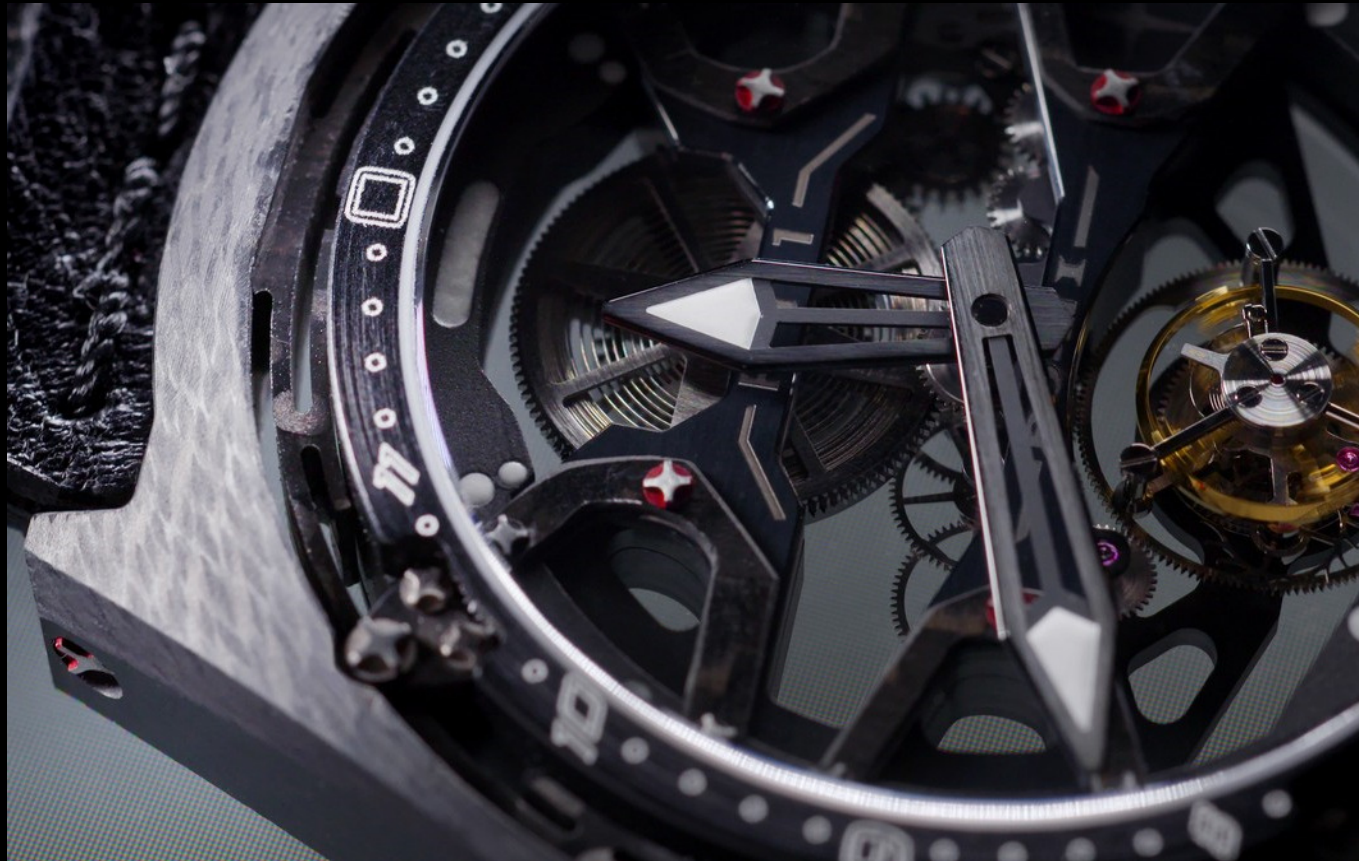


THE HYPERWATCH
EXTREME FLYING TOURBILLON

RO-NI

R-T-1

BORN TO BE PERFECT AND IMPERTURBABLE IN ALL CONDITIONS OF USE



RO-NI INTRODUCES *HANDLING R*:
CARBON-FIBER SUSPENSION ON 3 AXES
PERFECTION IN ALL CONDITIONS
36GR COMPLETE

RO-NI

R-T-1 +



CASE+: 1+1 TAILORMADE STONE

★
RO-NI

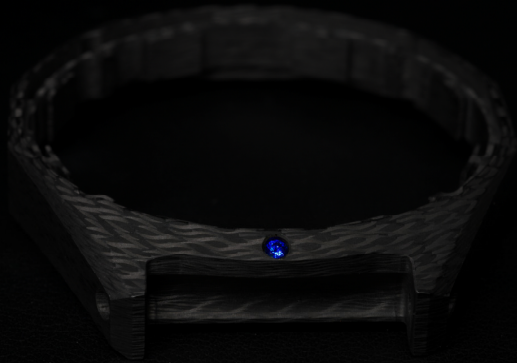
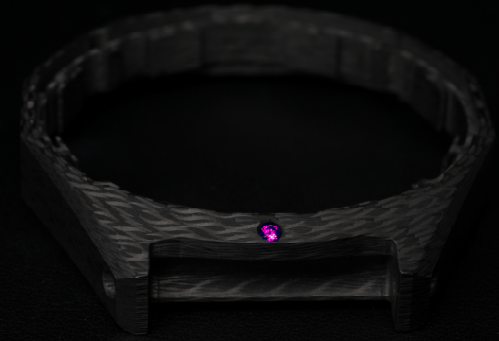
R-T-1 +



CASE+: 1+1 TAILORMADE STONE

RO-NI

R-T-1 +



CASE+: 1+1 TAILORMADE STONE

★
RO-NI

R-T-1 K



ROYAL CASE: TAILORMADE DIAMONDS&STONES



RO-NI

R-T-1 C-TYPE



LIGHTENED CASE

CARBON FIBER HANDS

CARBOGRAPHEN SINTERED CG-30-SV SUSPENSIONS



RO-NI

R-T-1 C-TYPE



FULL TAILORMADE



RT1-R - SG1 - SOFIA GOGGIA COMPETITION 20/21



RT1-R - JULY 2020: RO-NI INTRODUCES CARBON FIBER BRIDGES AND HANDS


RO-NI

RT1-R



HANDS AND BRIDGES IN PURE CARBON FIBER - PURE FIXINGS WITHOUT GLUE

NEW FRONTIER OF HYPERWATCH

RO-NI

RT1-R - SG1 - SOFIA GOGGIA COMPETITION 20/21



- ALPIN SKI WORLD CUP 20-21 - DH WORLD CUP WIN

RT1-R



R-T-1 SG1 - SOFIA GOGGIA COMPETITION 21/22



RT1 WITH THICKNESS REDUCTION

RO-NI

R-T-1 SG1 - SOFIA GOGGIA COMPETITION 21-22



CARBON FIBER HANDS



REDUCED THICKNESS OF TITANIUM BRIDGES AND
REDUCED THICKNESS OF CASE
CARBON FIBER CROWN
SUSPENSIONS: CG-30-SV CARBO-GRAPHENE SINTERED



RT1-GC - GIOVANNI CASTIGLIONI



HIGH-CLASS PERFORMANCE

IN 2019 RO-NI INTRODUCES CARBO-GRAPHENE *CG-30-SV*



RT1-GC - GIOVANNI CASTIGLIONI



CLASS ALCHEMY BETWEEN CARBONFIBER AND GOLD



RT1-GC - GIOVANNI CASTIGLIONI



DISCREET TECHNOLOGICAL EXTREME JEWEL



RT1-GC - GIOVANNI CASTIGLIONI



SUSPENSIONS: CARBONFIBER-GRAPHENE SINTERED
CG-30-SV WITH GOLD DECORATION

INCREASED TRACTION SYSTEM WITH 1+3 SCREWS

MASTERFUL MANUFACTURING PROCESS OF CARBON
FIBER FOR WEIGHT COMPENSATION LIGHTENING

INTRODUCTION OF THE RCS SYSTEM IN CARBON CASE



RO-NI

RT1-GTS



THE EXTREME ELEGANCE OF ART

★
RO-NI

RT1-GTS



it is not the how much but the how

CARBON-GOLD COUPLINGS WITHOUT GLUE WITH MASTERFUL JOINTS CREATE IN HOUSE
THE LOST WAX TECHNIQUE COMBINED WITH CNC PROCESSING: A NEW VISION OF ART



RT1-GTS



- JEWEL IN JEWEL -

- TECHNIQUE IN TECHNOLOGY -



- MASTERPIECE OF ART -



SUPERLEGGERO



THE AERO HYPERWATCH
FIRST OF SPECIES



SUPERLEGGERO

SUPERLEGGERO EQUIPMENT

MOVEMENT WITH BASEPLATE-BRIDGES-HANDS IN PURE CARBON FIBER

AR-T AERODYNAMIC TECHNOLOGY – DEPORTANT AERODYNAMIC CASE

PWS - PRECOMPRESSION WATERPROOFF SYSTEM -

DED - DYNAMIC ELASTIC DEFORMATION SYSTEM -

7 CARBON – 7 DIFFERENT TYPES OF CARBON FOR 7 DIFFERENT COMPONENTS

4D SUSPENSION SYSTEM - *HANDLING RSR* -

TOTAL WEIGHT 22GRAMS*



**WITH SPORT PRODUCTION STRAP*



SUPERLEGGERO

EVOLUTION - PERFORMANCES

MAXIMUM LIGHTNESS

MAXIMUM STIFFNESS

MAXIMUM ABSORPTION OF VIBRATIONS AND IMPACTS

SUPER-LIGHT, FLEXIBLE, IMPACT-RESISTANT HANDS FOR PERFECT STABILITY

MAXIMUM STABILITY TO THERMAL VARIATIONS

TOTAL WEIGHT 22GRAMS*

GENUINE MECHANICAL COUPLINGS

WE DO NOT USE ADHESIVES SYSTEMS: SCREWS, PINS AND RUBIES ARE ALL LAID WITHOUT GLUE IN PERFECTLY EXECUTED CARBON FIBER SEATS



**WITH SPORT PRODUCTION STRAP*



SUPERLEGGERO



ENGINEERING AT THE SERVICE OF ART

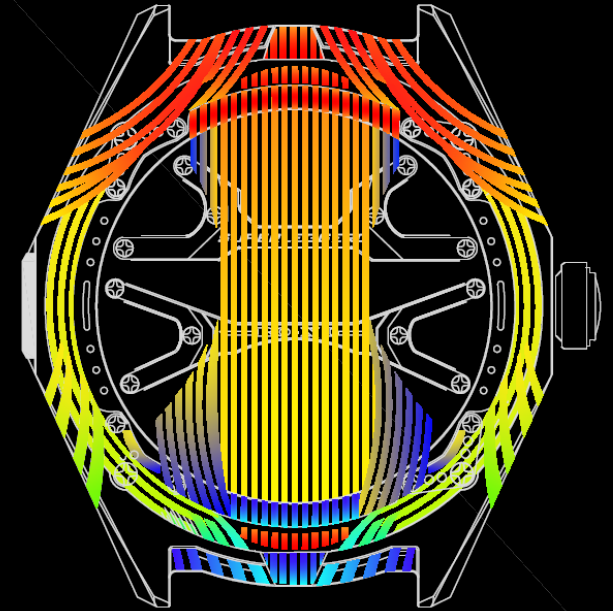


SUPERLEGGERO



AR-T AERODYNAMIC TECHNOLOGY – DEPORTANT AERODYNAMIC CASE

SCULPTED BY THE WIND



AR-T

AERODYNAMIC TECHNOLOGY

- PRIMARY VELOCITY VECTORS -



*SEE THE AR-T SECTION IN THE
SUPERLEGGERO PAGE*

RO-NI

SUPERLEGGERO
THE AERO HYPERWATCH



FROM BLACK SERIES TO FULL TAILORMADE

★
RO-NI



THE PLEASURE OF DESIRE



